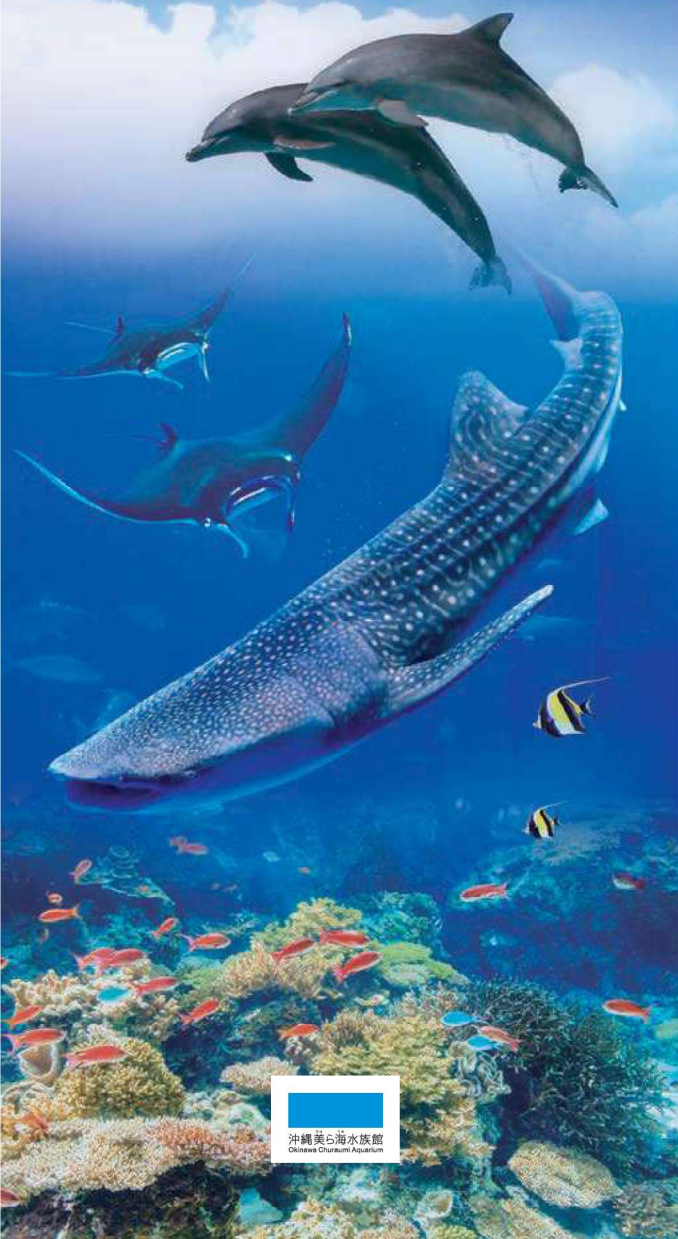


Okinawa Churaumi Aquarium



Experience an **Exceptional** and **Phenomenal** Journey into Okinawa's Beautiful Seas.

We're breaking the record for the longest whale shark captivity in the world!

The Okinawa Churaumi Aquarium has clarified the changes in body shape and behavior of whale sharks as they grow through long-term breeding. We will continue our efforts to elucidate the ecology of whale sharks, which are still a mystery.



Aquarium Concept

The aquarium recreates habitats where creatures live in the seas around Okinawa, which is comprised of the warm Kuroshio current, coral reefs, and the deep seas to the east and west of the Ryukyu Islands. The undersea world is a mystical expanse where a great variety of biological species live. The exhibits provide visitors with the chance to experience the value and wonder of the bountiful seas around Okinawa by journeying from the seashore out to the Kuroshio current off the coast and further down into the deep sea.

World's first large coral reef exhibit

The coral around Okinawa is a precious gift bestowed on us by the Kuroshio current. The exhibit is a true recreation of the habitat in which the coral live and provides an environment where coral reproduce.



One of the largest species of rays! Multiple manta rays in captivity.

Manta rays, one of the largest species of rays in the world, gracefully glide through the beautiful seas of Okinawa. Okinawa Churaumi Aquarium holds the record as the first aquarium in the world to succeed in keeping and breeding manta rays in captivity.



Churaumi App

Use the app's "Guide Mode" to receive information such as descriptions of each exhibitions as you pass by. You can also check real time congestion information and event information for Okinawa Churaumi Aquarium. *The iPhone version automatically activates "Guide Mode".



Android



iPhone

Let's check the newest information!



A Journey to Amazing Encounters and Discoveries

Invitation to the Great Sea (4F)

Dazzling light and a refreshing breeze flow through the Uminchu Gate ushering you toward the glimmering emerald sea. Your journey to amazing encounters and discoveries begins here.



The Whale Shark sculpture greets you at the entrance to Okinawa Churaumi Aquarium. Take a photo in front of the sculpture and the Okinawa Churaumi Aquarium sign behind it to commemorate your visit.

Enjoy the view from above the "Coral Sea" as it sparkles in natural sunlight.



2 The Coral Sea (Viewed from above)

Journey to the Coral Reef (3F)

A floor where you can observe a variety of corals and the creatures that live in them up close. This is the world's first exhibit of a large coral reef.



4 Life in the "Inoh"

"Inoh" is the Okinawan word for shallow water surrounded by coral reefs. Here we have creatures that live in the inoh (reef lagoon) such as sea stars and sea cucumbers. Please enjoy it along with the video on your monitor.



At the Coral Sea exhibit, you can see how the reef is built up and observe up close the habitat the reef provides and the creatures living there.

5 The Coral Sea

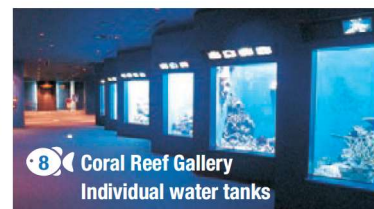


6 The Sea of Tropical Fish

The exhibit offers various angles for visitors to observe the colorful fishes. This exhibit contains the most species of marine life in the aquarium.



7 Coral Reef World



8 Coral Reef Gallery Individual water tanks

The dynamic world of migratory fish

Journey to the Kuroshio Sea (2F)

Visitors do not want to miss the aquarium's premier attraction, the "Kuroshio Sea", and the "Shark Research Lab", where you can learn about the life and behavior of sharks.



11 The Kuroshio Sea

A large tank where whale sharks, several manta rays, yellowfin tuna and schools of skipjack tuna swim comfortably. The tank is 10m deep, 35m wide and extends back 27m. A dynamic encounter with the magnificent Kuroshio sea awaits you.



10 Shark Research Lab

This learning space has a special shark tank. You can study the jaws of different shark species, and watch video clips of our shark research.



12 Whale Shark & Manta Ray Corner

This corner displays valuable data and research to help us learn more about whale shark and manta ray ecology.



14 Aqua Room

The Aqua Room allows visitors to comfortably experience the sensation of being in the middle of the ocean. Here, you can admire manta rays and other fish as they gracefully swim around you.



Re-Creation of Okinawa's Deep Sea

Journey into the Deep Sea (1F)



The deep sea is still an enigma.

This exhibit recreates that unknown and mysterious world. Start off on a thrilling adventure lurking deep down in the sea.



16 Deep Sea

The Deep Sea lets you observe creatures that ordinarily live at depths of 200 meters or more. Leisurely watch beautiful fish emerge from the darkness.



17 Ocean Planetarium

The planetarium exhibits bioluminescent fish and coral twinkling beautifully from reflected ultraviolet rays. The room is kept dark so you can easily see the creatures' glow.

13 Exploring the Kuroshio Sea (Above-water observation course)

You can observe the "Kuroshio Sea" freely from above.

Viewing hours

8:30 - 11:00

(Last admission 10:45)

17:30 - Aquarium closes

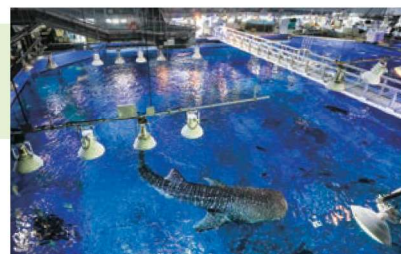
(Last admission 15min before the aquarium closes)

*Closed 11:00 - 17:30 for maintenance and caretaking

*Viewing times may vary.

No reservation necessary

Admission free



Please use the exhibit elevator at Whale Shark & Manta Ray Corner.



19 Ryukyu Arc Riverside

The Ryukyu Arc is the stretch of islands from Kagoshima's Amami Islands to Okinawa, and on to the Yaeyama Islands. The natural environments of the forests and estuaries have been replicated in a tank that features Okinawa's rare creatures.



Okinawa Churaumi Aquarium Map

- Restroom
 First Aid Station
 Information
 Elevator
 Coin Locker
 Nursing Room
 Emergency Exit
 AED
 Ostomate

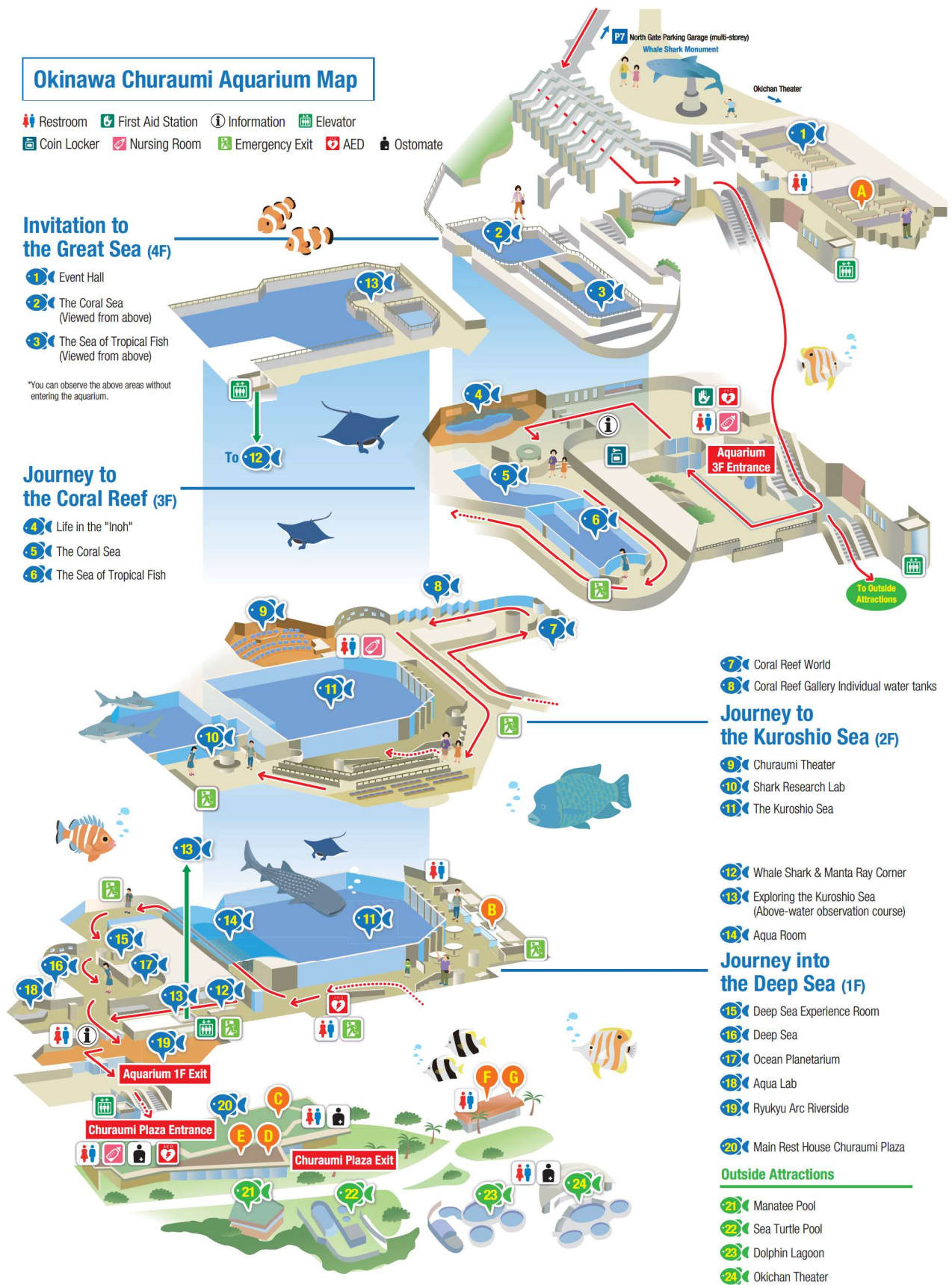
Invitation to the Great Sea (4F)

- 1 Event Hall
- 2 The Coral Sea (Viewed from above)
- 3 The Sea of Tropical Fish (Viewed from above)

*You can observe the above areas without entering the aquarium.

Journey to the Coral Reef (3F)

- 4 Life in the "Inoh"
- 5 The Coral Sea
- 6 The Sea of Tropical Fish



- 7 Coral Reef World
- 8 Coral Reef Gallery Individual water tanks

Journey to the Kuroshio Sea (2F)

- 9 Churaumi Theater
- 10 Shark Research Lab
- 11 The Kuroshio Sea

- 12 Whale Shark & Manta Ray Corner
- 13 Exploring the Kuroshio Sea (Above-water observation course)

- 14 Aqua Room

Journey into the Deep Sea (1F)

- 15 Deep Sea Experience Room
- 16 Deep Sea
- 17 Ocean Planetarium
- 18 Aqua Lab
- 19 Ryukyu Arc Riverside

- 20 Main Rest House Churaumi Plaza

Outside Attractions

- 21 Manatee Pool
- 22 Sea Turtle Pool
- 23 Dolphin Lagoon
- 24 Okichan Theater

Outside Attractions

There is no charge for viewing facilities through .

21 Manatee Pool

The Manatee Pool is home to the manatee, an animal that was the model for the legends of the mermaid.



22 Sea Turtle Pool

We raise sea turtles that live in the waters around Okinawa. From above the water, you can observe sea turtles swimming on the surface of the water, including the sandy beach where they lay their eggs, and in the viewing room on the basement floor, you can watch them swimming underwater from the side.



23 Dolphin Lagoon

You can observe dolphins from up close at the Dolphin Lagoon. Please note that dolphins may splash seawater in the vicinity due to their movements.



24 Okichan Theater

Exciting dolphin shows are presented with the blue sea in the background. Also our staff can take a souvenir photo of you with dolphins in the background (fees apply).



Dolphin shows

10:30 - 11:30
13:00 - 15:00 - 17:00

Free

Please check the official website for details on programs held around the aquarium. Programs may be cancelled due to bad weather conditions, animal health, or other reasons.



You can purchase gelato ice creams made with Okinawan ingredient

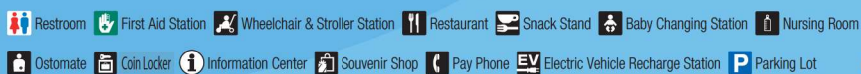
Our staff can take a souvenir photo of you with a whale shark sculpture in the background (fees apply).



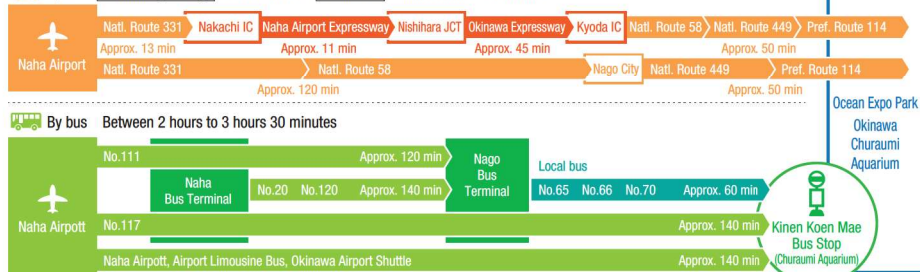
Ocean Expo Park Map



Trolley service is available in the park.



 By Car Okinawa Expressway About 2 hours Local roads About 2 hours 50 minutes



*The shedule is subject to change due to the physical condition of the animals or bad weather.

Activity	9:00	10:00	11:00	12:00	13:00	14:00	15:00	16:00	17:00	18:00	19:00
The Sea of Tropical Fish					13:00			15:30			
Journey to the Kuroshio Sea		9:30					15:00		17:00		

	Average season	Peak season
Okinawa Churaumi Aquarium Churaumi Plaza	8:30 – 18:30 (Last admission 17:30)	8:30 – 20:00 (Last admission 19:00)
Manatee Pool, Sea Turtle Pool Dolphine Lagoon, Okichan Theater	8:30 – 17:30	8:30 – 19:00 (During winter break 8:30 – 17:30)

*Please check the official website for the off-season and peak season set periods.

● **For purposes of determining the age and school year of student visitors, we use April 1st as our changeover date for the new year.** ● Some form of identification may be requested when purchasing tickets at the Okinawa Churaumi Aquarium ticket counter (driver's license, student ID, etc.) ● Holders of certificates for physical, rehabilitation or mental disabilities may enter free of charge along with one accompanying person. (Please show your certificate at the aquarium ticket counter.) ● Group discounts are applicable for groups of 20 or more (group purchase only) ● School Discount: Group discounts may be applied to groups of less than 20 students on an elementary, middle or high school event if an application is presented in advance.

Reminder

Food and drinks are prohibited in the aquarium. Smoking is not permitted indoors. Pets are not allowed with the exception of seeing-eye, service and guide dogs. Revisions made to the Act on Welfare and Management of Animals do not permit visitors to leave their pets with aquarium staff.

Admission free	Hours of Operation		Annual Passport
	8:30 – Last admission		
	General	Groups (20 or more)	
Adults/ Age 18 and older	¥2,180	¥1,730	¥4,360
High school students/ Ages 15-18	¥1,440	¥1,140	¥2,880
Children / Ages 6-15 (elementary/junior high school students)	¥ 710	¥ 560	¥1,420
Under 6 years old	Admission free		—

Facility manager: Urban Parks Division, Department of Civil Engineering and Construction, Okinawa Prefecture 098-866-2035
Designated administrator: Okinawa Churashima Foundation 0980-48-3645



There is a possibility that some of the program contents described in the brochure may have been changed. For the latest information, please check the Okinawa Churaumi Aquarium official website using the QR code above.

<https://churaumi.okinawa>

Inquiries

Okinawa Churaumi Aquarium

424 Ishikawa, Motobu-cho, Kunigami-Gun, Okinawa 905-0206
TEL.0980-48-3645 FAX.0980-48-4444

第一種動物取扱業に関する表示

●名称:沖縄県国営沖縄記念公園内施設(海洋博覧会地区内施設)

●所在地:沖縄県国頭郡本部町字石川424番地

●種別:展示 ●沖動展第353号 ●有効期限:2027年5月15日

●責任者：水族館施設／芦田裕史 海獣施設／黒須柚衣